

A commitment of service and quality to our customers.

Since 1967, W. R. Sharples Company has maintained a long-standing reputation for delivering quality. We have achieved success through the long-term relationships we have with many of our loyal customers. They learn that they can depend on our consistency, honesty, and commitment to quality.

We are proactive in planning for the future. With capital investments in the latest technology, we have improved the precision and quality in our dies and related tooling. Our renowned level of service facilitated our entry into contract cutting. As a result, we can offer two distinct categories of services to our manufacturing customers: tooling and contract cutting



211 John Dietsch Square
North Attleboro, MA 02763

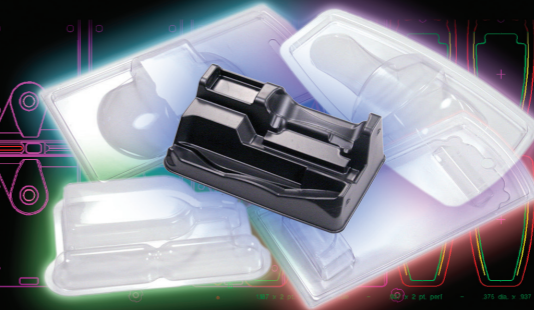
tel 508-695-5656 — toll free 1-800-969-DIES [3437] — fax 508-695-8804
email info@sharplesdie.com — web www.sharplesdie.com



PAPERBOARD PACKAGING TOOLS



THERMOFORMING DIES



SPECIALTY DIES



CONTRACT CUTTING



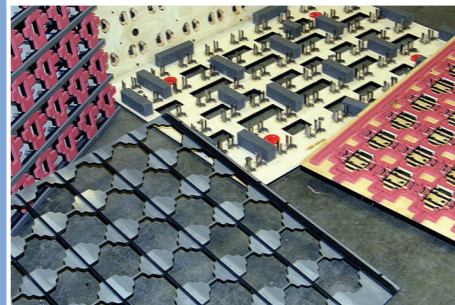
www.sharplesdie.com

1-800-969-DIES



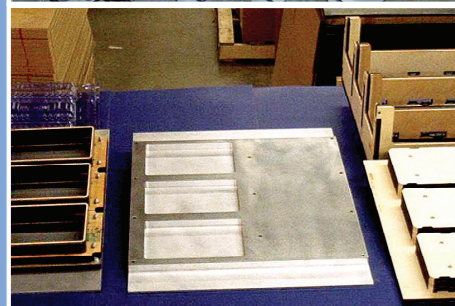
ABOUT SHARPLES

- ▶ Leading laser die manufacturer serving industry since 1967
- ▶ Offering services for tooling and contract cutting
- ▶ Continually demonstrating our commitment to quality and service
- ▶ Always researching the latest technology to enhance customer production
- ▶ An array of capabilities to meet the challenges of all customers



PAPERBOARD PACKAGING TOOLS

- ▶ Multiple automated benders and years of experience in folding cartons
- ▶ Water-jet cut ejection
- ▶ Counter plates manufactured to the most stringent tolerances
- ▶ Custom-built stripping jigs and blanking tools to fit industries top machines
- ▶ Blanker tooling from full-frame steel design to flat top



THERMOFORMING DIES

- ▶ Laser-cut dies, stackers, and related tooling
- ▶ Automated bending capabilities from 937 - 2" and 2pt to 6pt
- ▶ Floating and heated dies
- ▶ Multi-level anvils and cutting plates
- ▶ Decades of experience with Thermoforming tooling



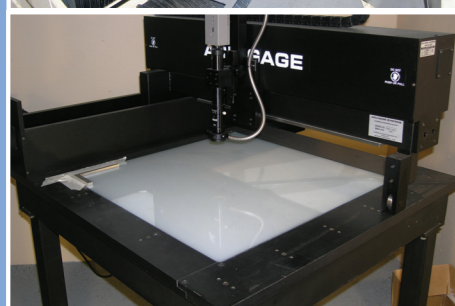
SPECIALITY DIES

- ▶ Serving automotive, produce bags, specialty printing, and in-house packaging industries
- ▶ Laser cut dieboards available in various thicknesses, types and kerfs
- ▶ Laser-cutting steel for mounting plates, cutting plates, or feed-thru assemblies
- ▶ Automated bending from 937 2pt to 2" 6pt
- ▶ In-house welding and brazing



CONTRACT LASER AND WATER-JET CUTTING

- ▶ Quick turnarounds on quotes, prototypes, and finished parts
- ▶ Superior nesting in design and reverse engineering available
- ▶ Digital readouts from our state-of-the-art measuring systems upon request
- ▶ Pallet changer and large cutting areas
- ▶ Cutting a variety of materials including steel (and stainless), wood, aluminum, and rubber

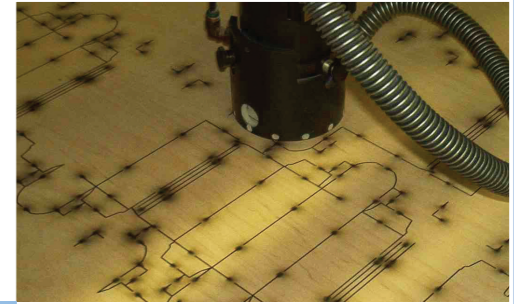


QUALITY CONTROL

- ▶ Stringent policy on inspection of parts and tools throughout manufacturing
- ▶ Routine documentation updates of customer and machine specifications
- ▶ Extensive references of industry machine specifications
- ▶ Coordinate measuring table in-house to provide quality control
- ▶ Document certification services (upon request)

LASER CUT DIEBOARDS

- ▶ Multiple lasers and multiple shifts to meet demands
- ▶ Vast inventory of various board thicknesses and types
- ▶ Scrutiny of a highly skilled diemaker to ensure perfect kerf
- ▶ Dieboards burned to perform with related tooling
- ▶ Climate control policy to enhance dieboard stability



LASER CUTTING STEEL

- ▶ Metal cutting within a close tolerance
- ▶ Clean accurate pieces cut burr-free
- ▶ Minimum heat-affected zone
- ▶ Laser-cut steel up to 1/2", stainless steel up to 5/16", and thin aluminum
- ▶ A better alternative to machining thin plates



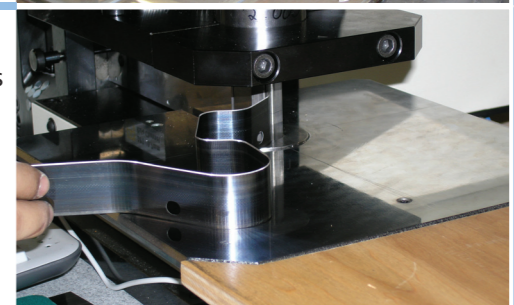
ABRASIVE WATER JET CUTTING

- ▶ Heat-free cutting process
- ▶ Ability to cut up to 6" thick material in a large work area
- ▶ Full cutting services for various materials: aluminum, copper, steel stainless, and steel
- ▶ Different edge cutting levels available
- ▶ Nonabrasive cutting services for rubber, foam, and gaskets



AUTOMATED BENDING

- ▶ Best for repeatability and dimensional stability for all cavities
- ▶ Automated bending from 2pt to 6pt up to 2" high rule
- ▶ Experience with various rules and an extensive inventory
- ▶ Quality inspection of all incoming knife stock
- ▶ Dies knifed to perform optimally with all related tooling



COUNTER CUTTING

- ▶ Largest skiving tool in the industry to prevent ghosting
- ▶ Positioning accuracy at ± 0.0005 per 12"; repeatability at ± 0.0005
- ▶ Continuous measurement of the depth of cut
- ▶ Manufactured from the original die program
- ▶ Various material types and thicknesses in stock



WATER-JET CUT EJECTION

- ▶ Less nicks required on die
- ▶ Reduction of skill needed to rubber a die
- ▶ High capacity and speed in cutting services for competitive pricing
- ▶ Full sheet layouts reducing rubbering labor by at least 50%

