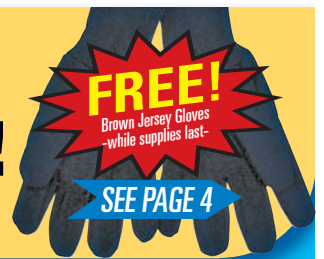




EVERYTHING FOR YOUR HOME AND WORK PROJECTS!
Products, Services and Solutions when you need it.



SPRING!

FEED & PROTECT YOUR LAWN WITH *Scotts*



Your satisfaction is fundamental to our family owned business.

We're not just a place to get your home needs, business tools and lawn & garden products, we're also a place for you to get your questions answered.

Service and solutions to make your life simpler, that's the Koopman family way.

<p>\$41.99 15M 6587836</p>	<p>\$17.29 5M 6587869</p>	<p>\$14.79 5M 6587919</p>	<p>\$17.79 5M 0816777 (10M Also Available)</p>
---------------------------------------	--------------------------------------	--------------------------------------	---

KOOPMAN'S WILL BEAT ANY ADVERTISED PRICE ON SCOTTS LAWN PRO PRODUCTS!
 Our staff undergoes extensive factory training in order to qualify as Scotts Lawn Professionals.

DOOR BUSTER SAVINGS!

<p>\$14.99 5M</p>	<p>\$7.87 5lb. 2393544</p>
<p>\$32.99 14M</p>	

5M: 6587414 14M: 5158787

START THOSE HOME PROJECTS YOU'VE ALWAYS WANTED WITH YOUR UPCOMING TAX REBATES.
 Ask a Koopman Expert!

\$2.99
Reg. \$4.99

Ames/True Temper Watering Can
 2-Gallon - lightweight.
 3310737

\$2.79
26oz.

Windex
 9996638
 Reg. \$4.59

MAKITA

MAKITA 5007 Circular Saw-7 1/4"
 0198028
 Compare at \$129.00
 Limit 1 per customer.

\$88.88
Compare \$129.00

MORE POWER TOOLS ON PAGE 6

3 CONVENIENT LOCATIONS

UXBRIDGE 12 Douglas St. (Rt 16 & 122) 508-278-5400	WHITINSVILLE 665 Church St. (Plummers Corner) 508-234-4545	N. GRAFTON 82 Worcester St (Rt 122/140 across from Fitz's) 508-839-6526
--	--	---

WWW.KOOPMANLUMBER.COM/SPRING
 Sign-up for "Web Only" Coupons and Specials Coming Soon.

* QUANTITIES LIMITED - WHILE SUPPLIES LAST. THE INFORMATION IN THIS ADVERTISING CIRCULAR MAY CONTAIN TYPOGRAPHICAL ERRORS OR INACCURACIES AND MAY NOT BE COMPLETE OR CURRENT. WE THEREFORE RESERVE THE RIGHT TO: ** CORRECT ANY ERRORS, INACCURACIES OR OMISSIONS. ** CHANGE OR UPDATE INFORMATION AT ANY TIME WITHOUT PRIOR NOTICE. * PLEASE NOTE THAT SUCH ERRORS, INACCURACIES OR OMISSIONS MAY RELATE TO PRODUCT DESCRIPTION, PRICING AND AVAILABILITY. * IMAGES OF PRODUCTS MAY DIFFER BASED ON AVAILABILITY AT TIME OF PURCHASE.

CIRCULAR PRICING GOOD THROUGH MAY 25 UNLESS OTHERWISE NOTED

ORTHO®

SOLUTIONS



FROM

KOOPMAN

LUMBER & MILLWORK

Scotts

6807200

\$4.49
32oz.



Many Roundup
and Ortho
Options in Stock



\$12.99
1.33 Gal

Pull 'N Spray 6769145 1.33 Gal \$12.99
Granular Shaker 4753190 2.5lb. \$ 6.89



\$18.99
1.33 Gal

6379390

\$10.99
24oz.



9292004



Our staff undergoes
extensive factory
training in order
to qualify as
Scotts Lawn
Professionals.

Scotts



\$10.99
16oz.

9990110



FREE!

Brown Jersey Gloves
-while supplies last-

SEE PAGE 4

MintCraft™

PRO TOOLS



\$21.99



48"
Fiberglass
Handle
Shovel
9690199

\$16.99



60"
Fiberglass
Handle
Cultivator
6047781

\$23.99



60"
Fiberglass
Handle
Bow Rake
2668267

Koopman's carries a complete line of Pro Tools as well as a variety of tools that meets every project and budget.



Jonathan Green

FOR THE BEST LAWN IN TOWN



Jonathan Green Organics

FOOD GRADE INGREDIENTS - SAFE FOR CHILDREN AND PETS

USE IN PLACE OF 10 BAGS OF LIME!

SAVE MONEY AND YOUR BACK!
Spread 45# instead of 500#!

\$29.99
45#

All Natural!
MIR-A-CAL
Pelletized Calcium Fertilizer

- Rapidly raises soil pH, faster than lime
- Provides Calcium - essential for healthy lawns & plants
- Use on Lawns, New Seedlings, Sod Lawns & Gardens

Soil pH Range
6.0 to 6.8
Ideal for Lawns

Ph TEST KIT \$0.99

SAVE \$5
MAIL IN REBATE!

RAPIDLY RAISES SOIL pH faster than lime

GREAT SELECTION OF GARDEN AND VEGETABLE FEEDS

25# AND 50# ECONOMY CONTRACTOR MIXES **IN STOCK**

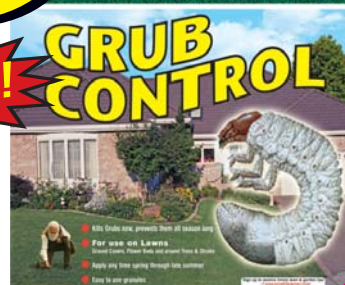
«SUPERSALE!»

\$15.99
5M

NEW!

GRUB CONTROL

Contains Imidacloprid - The Active Ingredient in Merit®



*PRICE GOOD THROUGH MAY 25, 2008
JG11927

\$23.99
5M



SAVE \$5
MAIL IN REBATE!

JG11584

\$39.99



SAVE \$5
MAIL IN REBATE!

JG11585

RECEIVE UP TO \$25.00 GIFT CERTIFICATE - MAIL IN OFFER FROM JONATHAN GREEN ORGANIC PRODUCTS! details in store



Compare our Bagged Prices to Messy Truckloads and SAVE MONEY!

BAGS ARE EASIER TO MANAGE, PLACE, HANDLE and OVERALL CLEANER. NO MESSY LEFTOVERS FROM DUMPING TO PICK-UP.

BAGGED MULCH

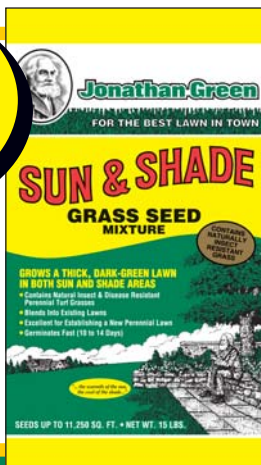


We Load Your Vehicle For YOU!

\$23.99
7lb.

Jonathan Green Sun & Shade

7lb. JG12005 \$23.99
3lb. JG12002 \$12.99



\$19.99
3'x100' ft.

Jonathan Green 100' Premium Landscape Fabric

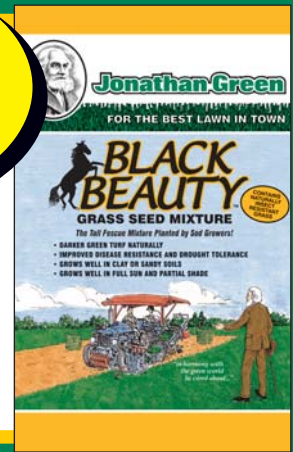
3'x100' JG12424 \$19.99
3'x50' JG12424 \$ 9.99



\$19.99
5#

Jonathan Green Black Beauty

For Darker Color Turf
5# JG10318 \$19.99
15# JG10318 \$53.99



3

WWW.KOOPMANLUMBER.COM/SPRING
Sign-up for "Web Only" Coupons and Specials Coming Soon.

3 CONVENIENT LOCATIONS
UXBRIDGE WHITINSVILLE N. GRAFTON



Benjamin Moore® Paints

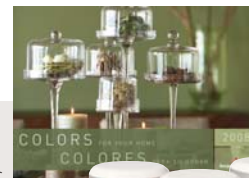


*KOOPMAN'S HAS THE LATEST
STATE-OF-THE-ART COLOR
FORMULARY AND
MATCHING SYSTEMS*

*We have on staff seasoned professionals in
the painting and building industry at every
location. This gets you the right answer fast.*



Our Modern Tranquility palette works beautifully with the clean lines and sumptuous textures of contemporary design. Visit us to learn about the hottest color direction for 2008. Pick up your **FREE** COLORS FOR YOUR HOME 2008 color card and Color Sample today!



Benjamin Moore Color Samples

Can't quite visualize how to bring the latest color trends into your home? Benjamin Moore Color Samples contain enough paint to cover a 2' x 2' wall surface, and are available in the latest color directions for 2008.



6993034

Simply visit one of Koopman's retail stores with this coupon and get a complimentary pair of Brown Jersey Gloves. One pair per customer please. While supplies last.



Koopman's has the largest number of Benjamin Moore samples in the Valley.

\$5.00
Reg. \$6.99

**DOOR BUSTER
SAVINGS!**



3M 2" Blue Masking Tape
6830012
Reg \$6.99
Limit 6 per customer.

\$22.00
Reg. \$30.99



Ben Moore Moorwood Exterior Fast Dry Primer
1-Gal
Limit 12 per customer.



\$749.00
EP-320

Weber Genesis EP-320 Grill

WV3751301



FREE Assembly
FREE First Propane Fill
FREE Local Delivery
FREE Expert Advice

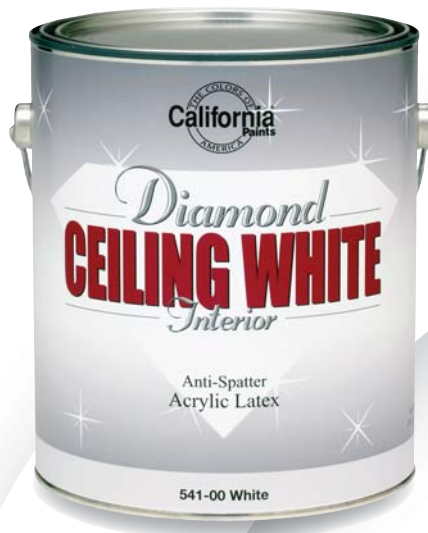
Koopman's has the largest number of Benjamin Moore paint samples in the Blackstone Valley. Come and see.

THE COLORS OF
California[®]
Paints
AMERICA



STORM STAIN

- Super color retention
- Color palette specially balanced to change with light throughout the day, reflecting nature and all of the hues found in it.



DIAMOND CEILING WHITE

- Anti-spatter
- Brightest white on the market
- Superior hide

START THOSE PROJECTS YOU'VE ALWAYS WANTED WITH YOUR UPCOMING TAX REBATES.

Ask a Koopman Expert!



GET THE BEST ADVICE

– Talk to Ken, a former painter who uses his experience and state-of-the-art computer systems to get you the right paint for the job!



\$19.99
40#

BLUE SEAL

Blue Seal Ultra Clean Black Oil Sunflower Seed

40# BSF114240 \$19.99



\$1.29

Victor

Victor Mouse Traps

8266322 \$1.29



\$9.99
30' feet

SAVINGS!



STANLEY

Stanley Powerlock
6588826
\$9.99

WWW.KOOPMANLUMBER.COM/SPRING

Sign-up for "Web Only" Coupons and Specials Coming Soon.

5

3 CONVENIENT LOCATIONS

UXBRIDGE WHITINSVILLE N. GRAFTON



KOOPMAN
LUMBER & MILLWORK

**YOUR POWER TOOL
POWERHOUSE!**

See our power tool specialists
about the latest battery technology
from DeWalt® – It works with your
old cordless tools.*

See store for details



《SUPERSALE!》
OUR LOWEST PRICE EVER!

DOOR BUSTER

SAVINGS!

\$14.99
Reg. \$24.99

SKIL

Skil 109pc drill driver set
S98109

\$9.99
Reg. \$15.99

IRWIN

Irwin 6pc Speedbore spade bit set
5994090

\$88.88
Compare \$129.00

Makita

MAKITA 5007
Circular Saw-7 1/4"
0198028
Compare at \$129.00
Limit 1 per customer.

Start those projects you've always wanted with
your upcoming **tax rebates**. Ask a Koopman Expert!



KOOPMAN'S WINDOWS, DOORS AND SIDING SOLUTIONS



JELD-WEN
WINDOWS & DOORS

MARVIN 
Windows and Doors
Made for you.®

VISIT KOOPMAN'S NEW DOOR AND WINDOW SHOWROOM IN WHITINSVILLE STORE. COME IN AND SEE.

ECLIPSE
COMPOSITE
PORTICO
Deck & Rail

For more information visit
www.porticodecking.com
or call Fiber Composites
at 704-463-7120



Portico™ Eclipse offers clean uniform appearance.

Portico™ Eclipse is the way to give the deck its best appearance. **Eclipse** offers a smooth, continuous surface that highlights the premium quality look of **Portico™**'s boards.

Portico™ Eclipse reversible boards are tough, have substance when you stand on them, and have the look of a hardwood floor with no fasteners in sight.

Eclipse offers all the advantages of traditional **Portico™** boards smooth and slip resistant.

The innovative formula for **Portico™** boards is a tough 100% virgin polymer with a furniture grade maple wood flour which provides consistent color throughout the board.



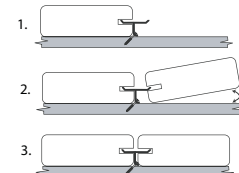
PHANTOM
HIDDEN DECK FASTENER
www.phantomfastener.com

TigerClaw
Hidden Deck Fasteners

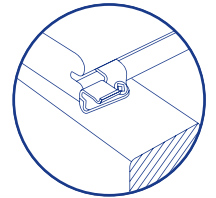
The Fastest Deck Around!

3 Easy Steps

www.phantomfastener.com



(see back for detailed installation instructions)



Backed by a 20-year limited warranty, **Portico™ Eclipse** Decking offers features not found in similarly priced boards. Build your deck with confidence and enjoy the many advantages of composite decking now with hidden fastener system. **Portico™** is an exclusive decking composite distributed only through independent lumberyards focused on service to the professional deck builder.



START THOSE PROJECTS YOU'VE ALWAYS WANTED WITH YOUR UPCOMING TAX REBATES.

Ask a Koopman Expert!



See what you can do with engineered lumber from Koopman Lumber. The possibilities are endless.



7

WWW.KOOPMANLUMBER.COM/SPRING
Sign-up for "Web Only" Coupons and Specials Coming Soon.

3 CONVENIENT LOCATIONS
UXBRIDGE WHITINSVILLE N. GRAFTON



FACTORY AUTHORIZED
**SERVICE
CENTER**

OUTDOOR LIVING



Take Back Your Yard



Reclaim round-the-clock use of your outdoor space with the Mosquito Magnet® – a long-term solution that is scientifically proven to effectively reduce mosquitoes and biting insects from your yard.

START THOSE PROJECTS YOU'VE ALWAYS WANTED WITH YOUR UPCOMING TAX REBATES. Ask a Koopman Expert!



FREE Assembly
FREE First Propane Fill
FREE Local Delivery
FREE Expert Advice



**REVIVE
YOUR OLD
MOSQUITO
MAGNET!**

Your trap needs service, just like your car needs an oil change. Koopman's has the supplies, parts and expertise.

**KOOPMAN'S SERVICES
WHAT WE SELL!**



Prices and merchandise shown herein are suggested, and retailers are free to change or alter prices or substitute with other merchandise. Merchandise not in stock may be ordered upon request. Occasionally merchandise may not be available because of circumstances beyond retailer's control. Their right to limit quantities is reserved. Retailer is not responsible for pricing errors and may withdraw any offer containing some.

Valassis.
One Targeting Centre
Windsor, CT 06095

ECR
PRSRT STD
US Postage
PAID
VALASSIS, INC.



Visit Our 3
Convenient
Locations

Uxbridge

12 Douglas Street
(508) 278-5400

Whitinsville

665 Church Street
(508) 234-4545

Grafton

82 Worcester Street
(508) 839-6526

WWW.KOOPMANLUMBER.COM/SPRING